



EYENETRA



REFRACTION TOOLKIT

More Info | www.eyenetra.com
Buy On-line | store.eyenetra.com

JOIN THE REVOLUTION!

Over 4.2 billion people across the globe require eyeglasses, and more than half are uncorrected due to access and cost barriers.

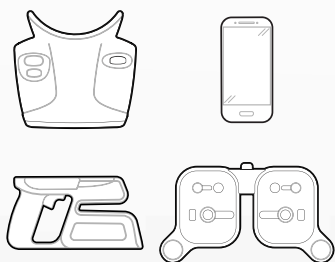
Traditional diagnostic equipment is cumbersome, expensive, and fails to leverage modern-day computing power.

We set out to simplify and demystify the refraction testing process. From the urban jungle to the Amazon, Greenland to Australia, vision loss sees no boundaries. Neither should correcting poor vision.

We have the tools. You have the know-how. Together, we can ensure all people see well.

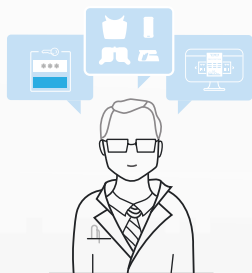
MAXIMIZE PATIENT CARE IN A FEW CLICKS

1. ORDER THE DEVICES



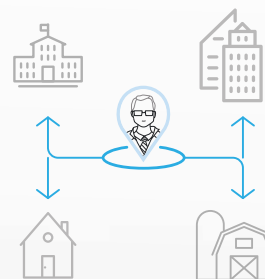
Full kit includes a portable auto refractor, auto-lensometer, phoropter, and phone.

2. CONNECT THEM TO INSIGHT



Sign up to our on-line EMR, build a practice page, setup your schedule, and start receiving patients.

3. REFRACT ANYWHERE



Register your team and expand your practice with optical shop, workplace, school or at-home testing.



Introducing EyeNetra's newest offering

OnSightSM

VISION CARE THAT YOUR EMPLOYEES WILL LOVE!



With OnSight by EyeNetra, vision care is delivered.

By bringing OnSight into your workplace, employers offer their staff convenience, time savings, improved productivity and employee satisfaction - and a really cool experience. OnSight comes to you with licensed optometrists and opticians, FDA-registered smartphone-powered optometry devices, and HIPAA-compliant cloud-based software.

No travel. No hassle. Really. It's that simple.



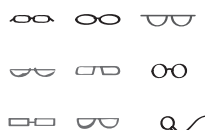
1

SCHEDULE
your appointment



2

TAKE
a comprehensive eye
exam and get Rx



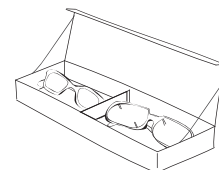
3

CHOOSE
glasses and/or
contacts



4

CHECKOUT
insurance,
credit card



5

RECEIVE
glasses and/or contacts
in about 2 weeks



EYENETRA



NETRA

Refraction Mobilized

A self-test refraction tool powered by a smartphone to collect new eyeglass measurements.

Using a series of simple game-like interactions in a Virtual Reality headset, NETRA enables anyone anywhere to collect their own refractive measurements. It's quick and easy to use in an office or in the field.

FEATURES AND BENEFITS



EASY TO USE - EASY TO TRAIN



PORTABLE - NO POWER REQUIRED



CONNECTED - NO MORE TRANSCRIBING



RUGGED - NO CALIBRATION NEEDED,
ZERO MAINTENANCE



AS ACCURATE AS AUTOREFRACTORS
COSTING OVER \$25,000



COMPLETE ACCOMMODATION CONTROL,
FOGGING IS PERFORMED BY THE DEVICE

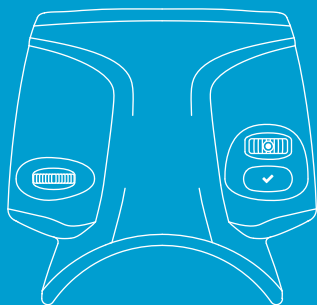


19 PEER-REVIEWED SCIENTIFIC AND
CLINICAL PAPERS PUBLISHED,
OVER 50,000 EYES TESTED

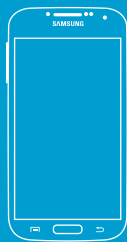
EXACTLY WHAT INFORMATION DOES NETRA TELL ME?

NETRA generates a recommended refraction for eyeglasses, correcting for nearsightedness, farsightedness, and astigmatism. More specifically, NETRA outputs the sphere, cylinder, and axis as well as the distance between eyes (PD). NETRA does not measure higher-order aberrations or quantify retinal conditions.

SELF-TEST REFRACTION TOOL POWERED BY A SMARTPHONE.



NETRA



SAMSUNG
GALAXY S4

FIND, ALIGN AND CONFIRM

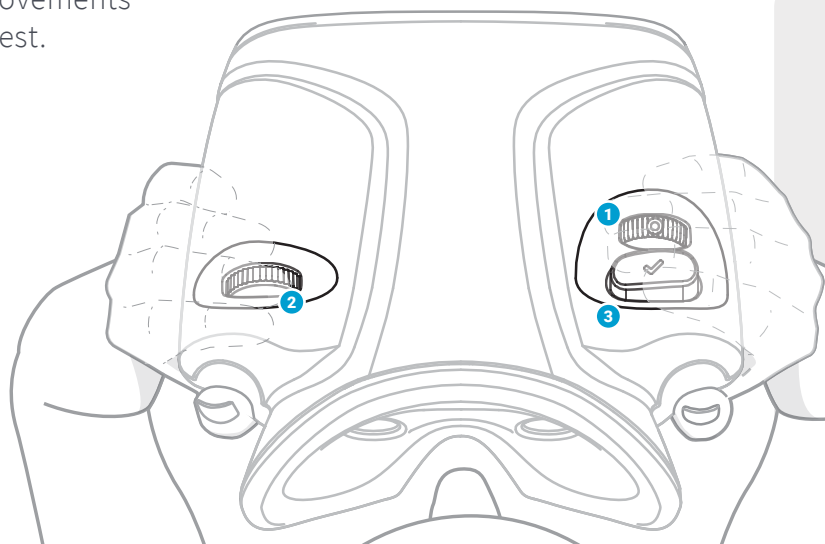
Repeating just three easy movements you are able to make a full test.



¹ Turn the Brightness knob to locate the red and green umbrellas.



² Turn the Alignment knob to make the two umbrella stems.



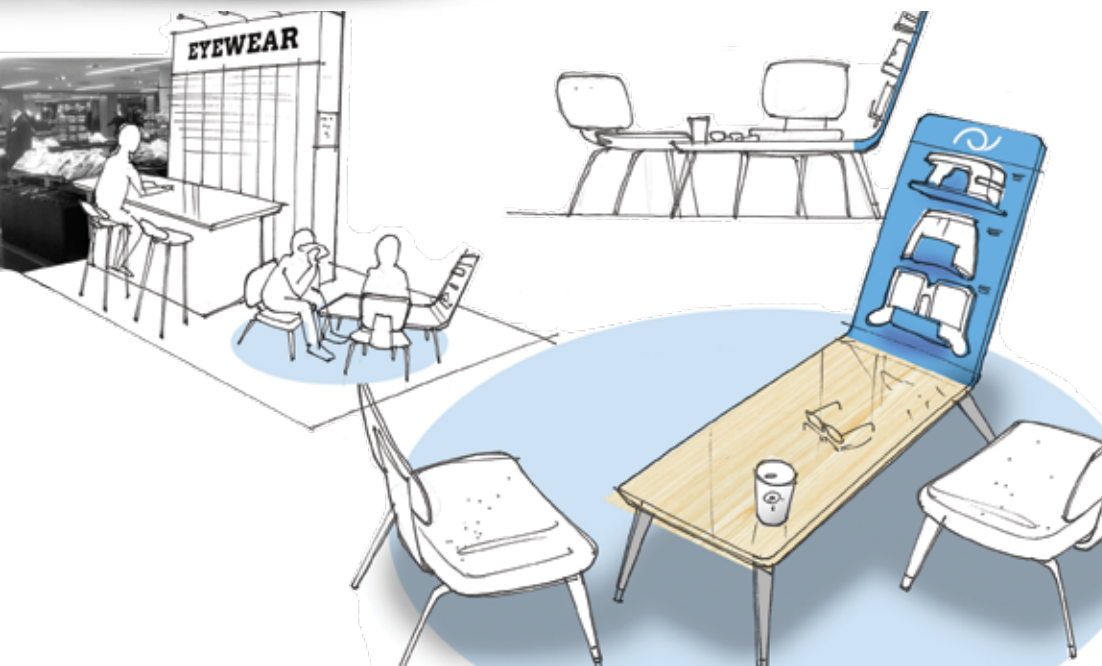
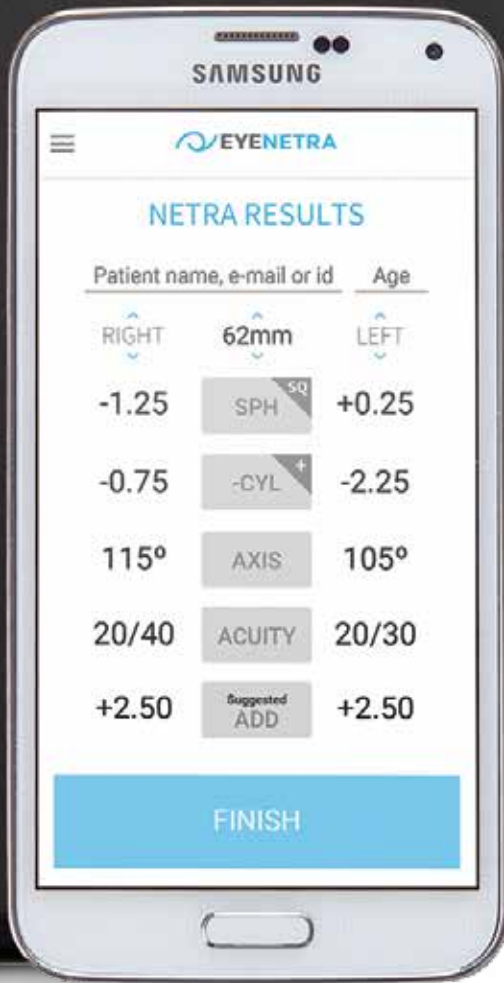
³ Press the Confirm button when complete



INSTRUCTIONAL
VIDEO

TECHNICAL SPECIFICATIONS

TECHNOLOGY	NETRA (Pat. Issued)
ACCOMMODATION CONTROL	Fogging (Pat. Pending)
LIGHT SOURCE	Smartphone (Samsung S4) Display (No Lasers)
MEASURING WAVELENGTHS	~550nm and ~650nm Simultaneously
SPHERE RANGE	-12 to +5.5D, 0.25D increment
CYLINDRICAL RANGE	0 to -7D, 0.25D increment
AXIAL RANGE	0 to 180, 1 degree increment
INTERPUPILLARY DISTANCE RANGE	52 to 72mm, 0.5mm increment
DEVICE DIMENSIONS	8.5cm x 20cm x 20cm (436g)
INTENDED PATIENT POPULATION	13 to 65 years old
EXTERNAL PROCESSING UNIT	Samsung S4
DILATION REQUIRED	No
CYCLOPLEGIC REQUIREMENTS	None
CALIBRATION REQUIREMENTS	None
OFFICE ILLUMINATION REQUIREMENTS	None (Optically Sealed)
SPECIALIZED FURNITURE REQUIREMENTS	None (Handheld)
FDA STATUS	NETRA (v1.01) is a Class 1 device exempt from premarket notification (510(k))
OPERATION	Temperature: 15°C to 40°C Relative humidity: 95% non-condensing
STORAGE/TRANSPORT	Temperature: -20°C to 90°C Relative humidity: 95% non-condensing



HERE'S AN IDEA

Looking for ways to serve your high-end, repeat customers? Offer them a relaxed environment within your existing store. Using state-of-the-art EyeNetra technology, provide them with a personalized experience.



SAMSUNG

EYENETRA

LOAD LEFT LENS

Hold Trigger and Tap Next

NEXT

EYENETRA



EYENETRA

NETROMETER

Lensometry Redefined

The handheld smartphone-based Netrometer captures the refraction of single vision, progressive and bifocal lenses in seconds. With the precision of 0.08D, the Netrometer is as accurate as top-tier lens meters. No alignment issues, tilting or mishandling inaccuracies. Just open the app, place it into the device, and take measurements.

FEATURES AND BENEFITS



EXTREMELY SIMPLE TO USE



PORTABLE AND LIGHTWEIGHT



**SINGLE VISION,
PROGRESSIVES AND BIFOCAL**



**AFFORDABLE ENOUGH
TO PURCHASE SEVERAL**



**RETAIL THEATER- DON'T LEAVE
CUSTOMERS FOR A MOMENT**

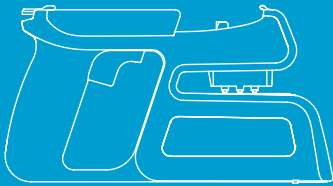


**FAST! KNOW THE CUSTOMER'S
GLASSES IN A FEW SECONDS**

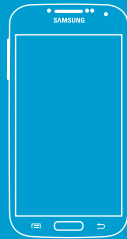
EXACTLY WHAT INFORMATION DOES NETROMETER TELL ME?

NETROMETER evaluates the power of customers' existing eyewear - Sphere, Cylinder, Axis, and Add Power (for progressive lenses). This information can be wirelessly transmitted to a printer or electronic medical records.

LENSOMETRY DOESN'T HAVE TO BE CUMBERSOME.



NETROMETER



SAMSUNG
GALAXY S4

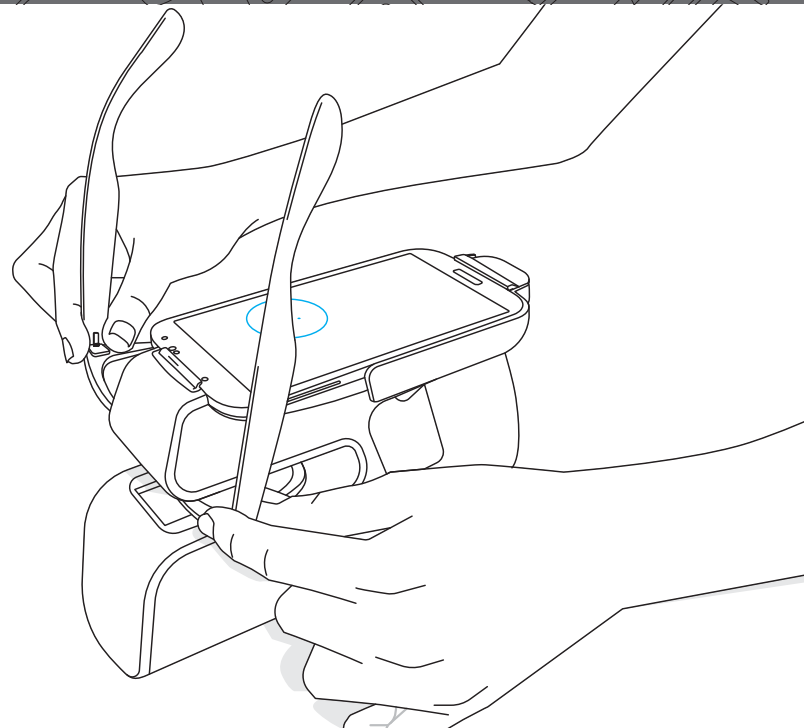


INSERT, FIND AND READ

Adjust the lens until the dot sits inside the indicated circle. Gently squeeze the trigger to hold the lens in place, and tap the screen to take a reading. Repeat for the other lens. it's really that fast.

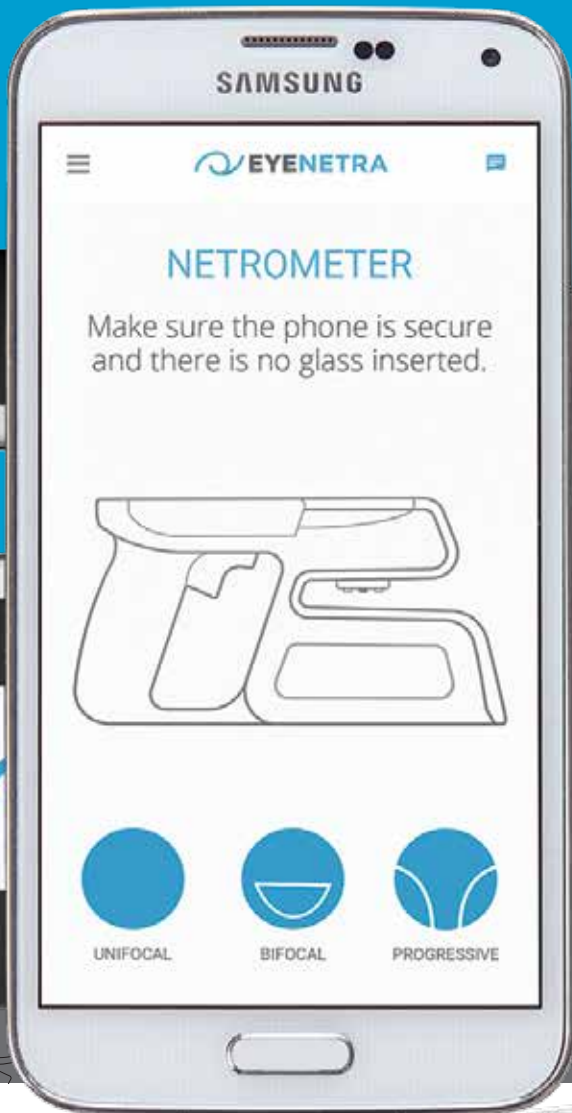


INSTRUCTIONAL
VIDEO



TECHNICAL SPECIFICATIONS

TECHNOLOGY	NEFLECTOMETRY (Pat. Pending)
CAMERA	Smartphone Back-facing Camera
LIGHT SOURCE	Smartphone (Samsung S4) Flash LED
MEASURING WAVELENGTHS	~400nm to ~750nm (Broadband)
SPHERE RANGE	-13 to +7.0D, 0.25D increment
CYLINDRICAL RANGE	0 to -7D, 0.25D increment
AXIAL RANGE	0° to 180°, 1 degree increment
LENS TYPE	Single Vision and Progressive Lenses
DEVICE DIMENSIONS	7.5cm x 11cm x 21cm (500g)
EXTERNAL PROCESSING UNIT	Samsung S4
MEASUREMENT TIME	3 seconds for Single Vision
SCRATCH, DUST AND COATING	Accepted
CALIBRATION REQUIREMENTS	None
OFFICE ILLUMINATION REQUIREMENTS	None (Optically Sealed)
SPECIALIZED FURNITURE REQUIREMENTS	None (Handheld)
FDA STATUS	Netrometer is a Class 1 device exempt from premarket notification (Sec. 886.1425)
OPERATION	<ul style="list-style-type: none"> Temperature: -15°C to 93°C Relative humidity: 95% non-condensing
STORAGE/TRANSPORT	<ul style="list-style-type: none"> Temperature: -15°C to 93°C Relative humidity: 95% non-condensing



HERE'S AN IDEA

Set up a service area outfitted with EyeNetra products to spot-check customer prescriptions and eyeglasses. Even if your associates cannot prescribe, they will always be able to double-check prescriptions to guarantee customer satisfaction before ordering glasses.



CYLINDER



AXIS



50 55 60

PD



MASK



SPHERE



 EYENETRA



NETROPTER

Acuity Simplified

Replace your cumbersome lens kit with an elegant, lightweight solution. The Netropter integrates a full-range of SPH, CYL, and AXIS values to refine measurements for distance and reading. Includes a pupillary distance adjustment and lock.

Running monocular and binocular visual acuity tests for distance and reading glasses has never been so simple.

FEATURES AND BENEFITS



AFFORDABLE AND PORTABLE



LIGHTWEIGHT AND EASY TO USE



REQUIRES NO SUPPORT STRUCTURE



BOTH DISTANCE AND READING TESTS

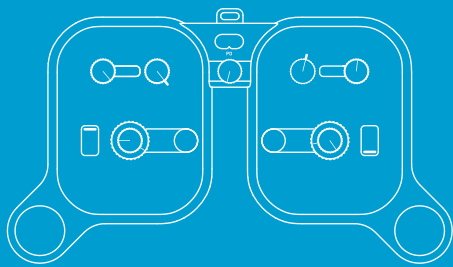


MOLDED POLYCARBONATE LENSES
WITH ANTI-REFLECTIVE COATING

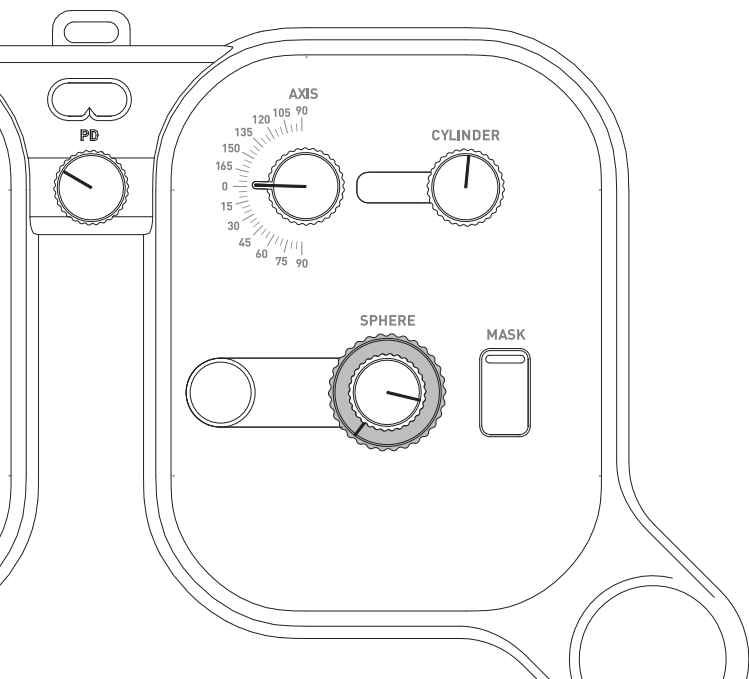
CAN I RUN A SUBJECTIVE REFRACTION USING NETROPTER?

Yes. Although the Netropter was designed to simply refine measurements from a reliable starting point, it is possible to perform all the usual procedures of a manifest refraction, including accommodation testing, binocular balance and axial refinements.

VISUAL ACUITY TESTING HAS NEVER BEEN EASIER.



NETROPTER



CHECK YOUR READINGS

Dial in the Netra or Netrometer results using the knobs for sphere, cylinder, axis and PD. Use the shutters to occlude each eye as necessary. Adjust the values to verify and refine the results, providing the customer with the most acceptable prescription.

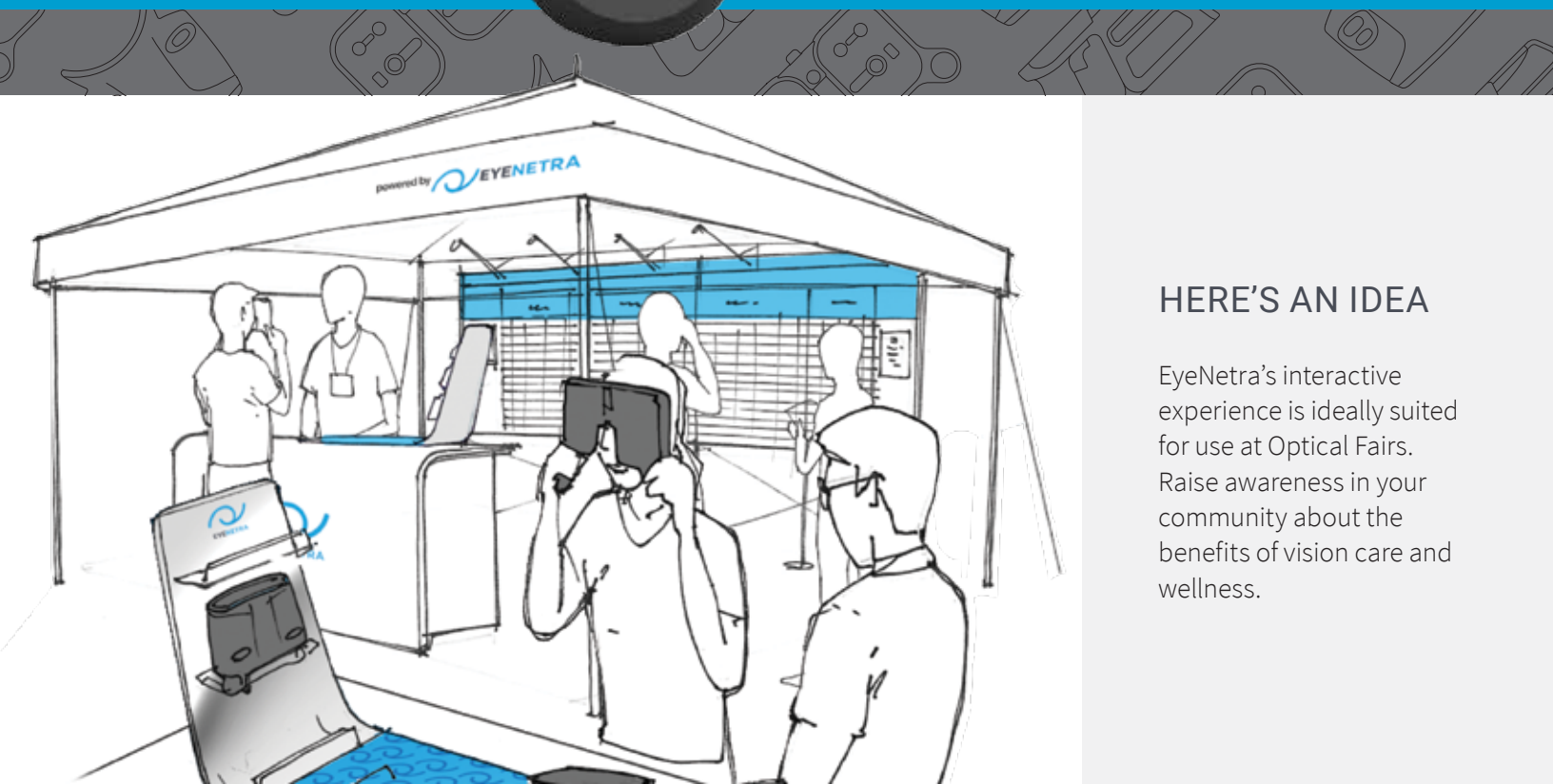


INSTRUCTIONAL VIDEO

TECHNICAL SPECIFICATIONS



TECHNOLOGY	TRIAL LENS STACK (25 LENSES PER EYE)
SPHERE RANGE	-10.75 to +5.0D, 0.25D increment
CYLINDRICAL RANGE	0 to -6D, 0.25D increment
AXIAL RANGE	0° to 180°, 1 degree increment
PUPILLARY DISTANCE RANGE	52 to 72mm, 1mm increment
VISUAL FIELD	~20° Degrees (14mm aperture)
ACUITY MEASUREMENTS	Binocular and Monocular
VISION TEST TYPE	Distance and Readers
DEVICE DIMENSIONS	5.0cm x 7cm x 10cm (less than 500g)
EXTERNAL PROCESSING UNIT	None
SETUP TIME	30 seconds
CALIBRATION REQUIREMENTS	None
POWER REQUIREMENTS	None (Manual Setup of Lenses)
SPECIALIZED FURNITURE REQUIREMENTS	None (Handheld)
FDA STATUS	Class I, exempt from 510(k) pre-market submission requirements
OPERATION	<ul style="list-style-type: none">• Temperature: -15°C to 93°C• Relative humidity: 95% non-condensing
STORAGE/TRANSPORT	<ul style="list-style-type: none">• Temperature: -15°C to 93°C• Relative humidity: 95% non-condensing



HERE'S AN IDEA

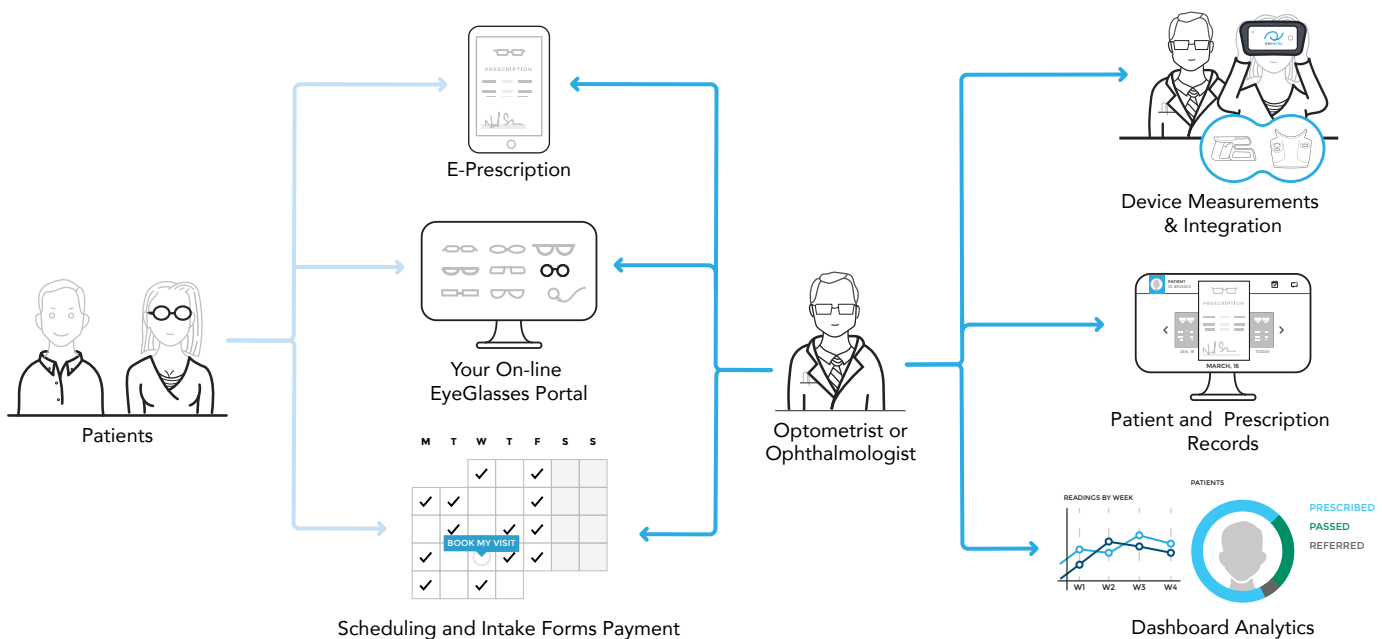
EyeNetra's interactive experience is ideally suited for use at Optical Fairs. Raise awareness in your community about the benefits of vision care and wellness.



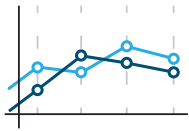
INSIGHT OPTOMETRY EMR MADE EASY

Grow your business with a web presence. Patients fill out their health history form prior to visiting, saving you and them precious time. Log into Insight's dashboard to monitor key success metrics and activity reports over time.

With an intuitive interface and unlimited cloud-based storage, Insight facilitates everything from prescription writing and data analytics to digital marketing and online booking for your patients. Designed specifically for you, Insight simply works for your business! Let's un-complicate things - together.



FEATURES & BENEFITS



ONLINE PRACTICE MANAGEMENT

Grow your business by building a web presence. Patients can now fill out their health history form prior to visiting, thus saving precious time for you and them. Log into Insight's dashboard to visualize key success metrics and monitor activity reports over time.



DEVICE INTEGRATION

Insight leverages the inherent connectivity in EyeNetra's product suite. We automatically collect device measurements, associate them with patient profiles, and store full medical records securely in the cloud so you can focus on your practice.



UNLIMITED STORAGE

We include unlimited storage and data backups for added peace of mind. You focus on taking care of your patients and we'll handle the software.



CONNECTED HEALTH

With our full workflow, Optometrists and Ophthalmologists can remotely assess data, reference notes, see visual acuity and review medical history to prescribe and send to patients via HIPAA compliant email. Please consult local telemedicine laws.

CHOOSE A PLAN THAT GROWS WITH YOU

Personal

- Review Measurements
- Sync Devices
- Export Tools
- Access via APIs
- Tech. Update
- 24/7 Support

Professional

- E-Prescriptions
- Web Booking
- Payment Gateway
- On-line Scheduling
- Sync Devices
- Export Tools
- Access via APIs
- Tech. Update
- 24/7 Support

Enterprise

- EMR Integration
- E-Prescriptions
- Web Booking
- Payment Gateway
- On-line Scheduling
- Sync Devices
- Export Tools
- Access via APIs
- Tech. Update
- 24/7 Support

NO HIDDEN FEES: Beyond the poor usability of traditional EMR's, there often lurks unexpected costs such as installation, maintenance fees, upgrades, additional computers, and servers. Insight's cloud-based platform eliminates these burdens.



MOBILE CLINIC KIT

The ultimate solution to take your practice on the road. Designed for you to conduct refractions anywhere, this mobile clinic kit includes the Netra, Netrometer, Netropter, Smartphone, Printer, and Accessories. Packed inside a lightweight and

portable semi-rigid case (smaller than your carry-on luggage), the kit is designed for ergonomic comfort and long-lasting durability. The kit is shock absorbent and water resistant. Ideal for mission trips and out-of-office testing situations.



ACCESSORIES

EXTRA PHONE

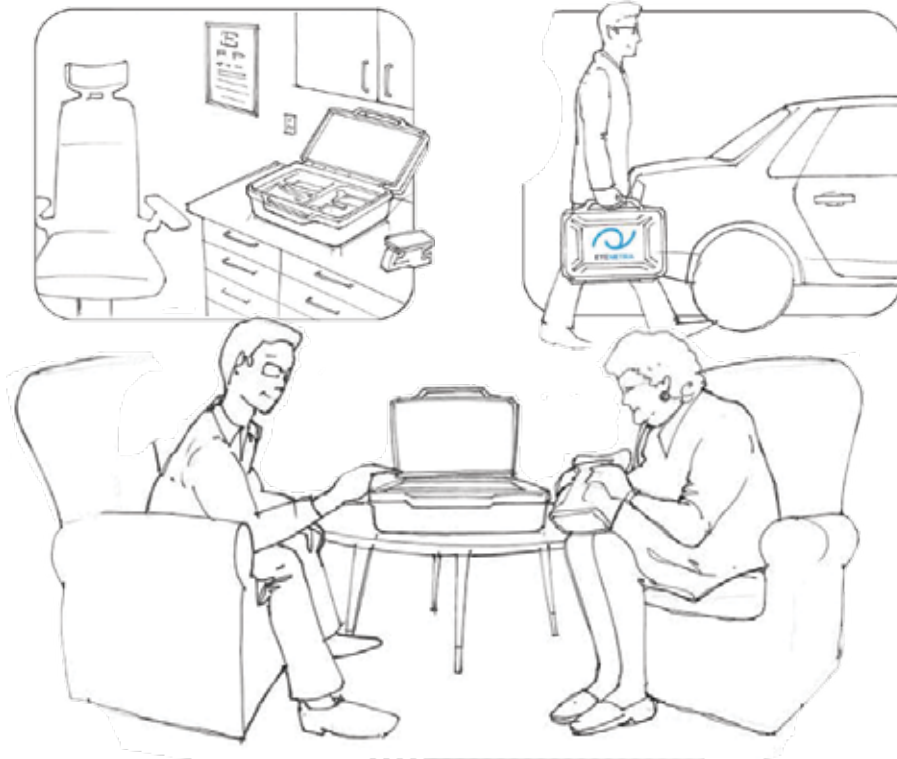
This is a regular Samsung S4 installed and calibrated for Netrometer and Netra applications. This product is offered for customers that purchased bundles and need a second smartphone to take measurements in parallel. It includes the phone, charging adaptor and cable.



ACCESSORIES

THERMAL PRINTER

Pair this portable, wireless printer with your smartphone to print your Netra and Netrometer results anywhere, anytime. The printer has an integrated rechargeable battery that lasts for days. The connection happens automatically via bluetooth. No setup, wires, or headaches.



HERE'S AN IDEA

EyeNetra's product suite is accurate, affordable, portable, and rugged ... ideal for an ECP looking to reach more patients outside of the office.



DO WELL
BY DOING
GOOD



EyeNetra, Inc.
35 Medford Street, Suite 302
Somerville, MA 02143
www.eyenetra.com
1-617-684-5680

